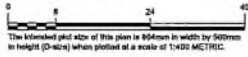


**REFERENCE PLAN TO ACCOMPANY BYLAW
No.12460 (CITY OF KELOWNA) TO CLOSE PARTS
OF ROAD DEDICATED ON PLAN 4636, 13388 AND
EPP4193 ALL OF SEC 13, TP 26, ODYD.**

PURSUANT TO SECTION 120 OF THE LAND TITLE ACT
AND SECTION 40 OF THE COMMUNITY CHARTER.
BCGS 82E.084

SCALE 1:400 METRIC



LEGEND

- Denotes Control Monument Found
- Denotes Standard Iron Post Found
- Denotes Standard Iron Post Set
- Denotes Unmeasured Point
- Denotes Iron Post Found or Set on July 13th, 2022 during survey for plan EPP12639, since destroyed, reset from water control

Distances shown are horizontal, ground-level distances, in metres and decimals thereof.

This plan shows site or more witness posts which are not set on the true corner(s).

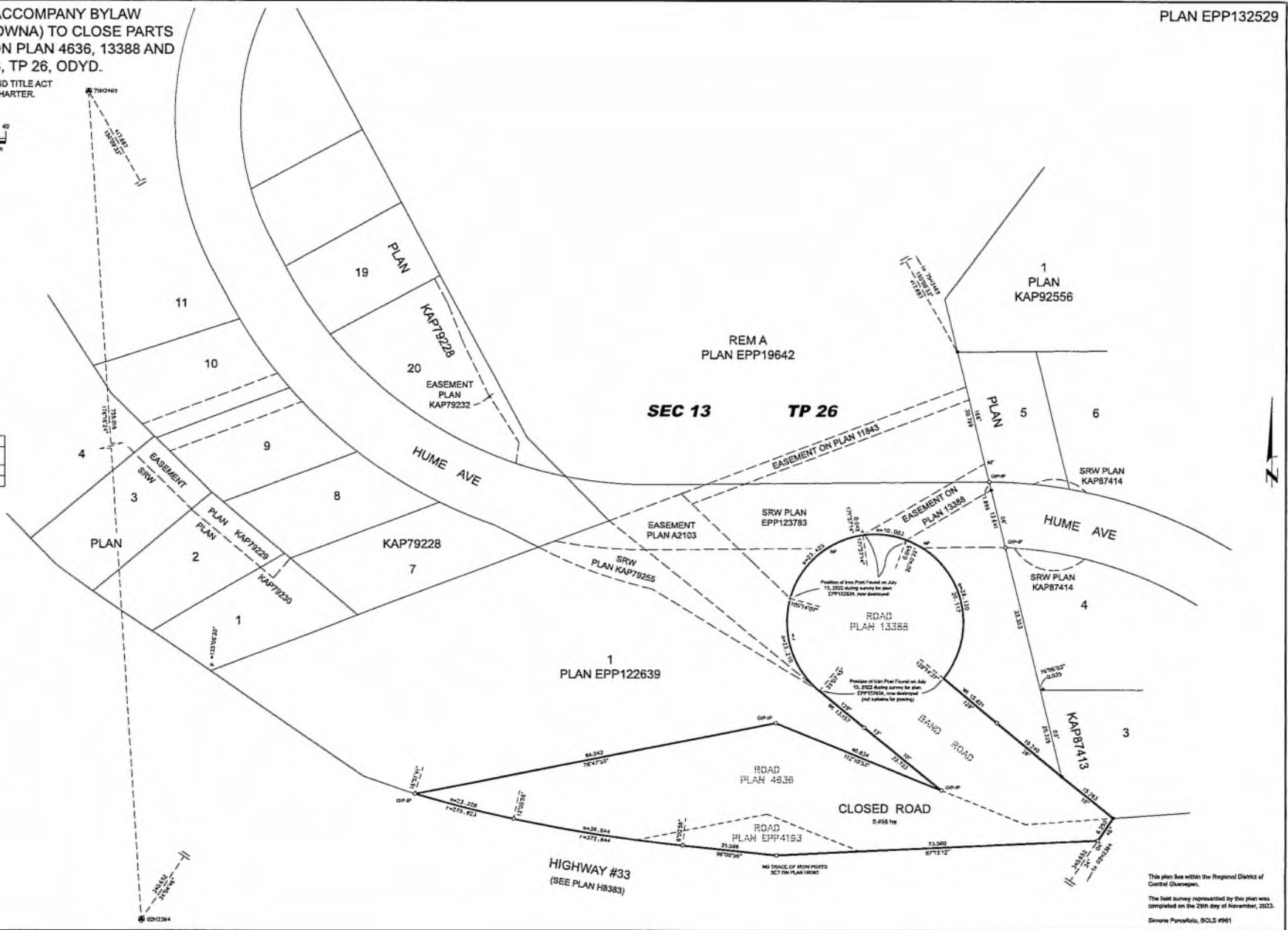
Integrated Survey Area No. 4, City of Kelowna, NAD83(CSRS) 4.0.0.BC.1.

Old bearings are derived from GNSS ties to geodetic control monuments 75H2489 and 02H2384 and are referred to the central meridian of UTM Zone 11.

The UTM coordinates and estimated absolute accuracy achieved are derived from the NAD83(CSRS) geodetic coordinates and standard deviations for geodetic control monuments 75H2489 and 02H2384.

This plan shows horizontal ground-level distances unless otherwise specified. To compute grid distances, multiply ground-level distances by the average spheroidal factor of 0.999732 which has been derived from geodetic control monument 02H2384.

| Point | NAD83(CSRS) 4.0.0.BC.1 UTM ZONE 11 COORDINATES | Northing | Easting | Absolute Accuracy |
|---------|--|------------|------------|-------------------|
| 75H2489 | | 527226.908 | 329995.136 | 0.02 |
| 02H2384 | | 526479.591 | 330014.400 | 0.02 |



**SUBDIVISION PLAN OF LOT 1, SEC 13, TP 26,
ODYD, PLAN EPP122639 AND CLOSED ROAD
ON PLAN EPP132529.**

PLAN EPP132530

BCGS 82E.084
SCALE 1:400 METRIC

The printed plot size of this plan is 394mm in width by 560mm in height (D-size) when plotted at a scale of 1:400 METRIC.

LEGEND

- Deviate Control Monument Found
- ▲ Deviate Standard Iron Peg Found
- Deviate Standard Iron Post Set
- Deviate Iron Post Found or Set on July 13th, 2022 during survey for plan EPP122639, since destroyed, reset from same control

Distances shown are horizontal, ground-level distances, in as-shown and detoural thread.

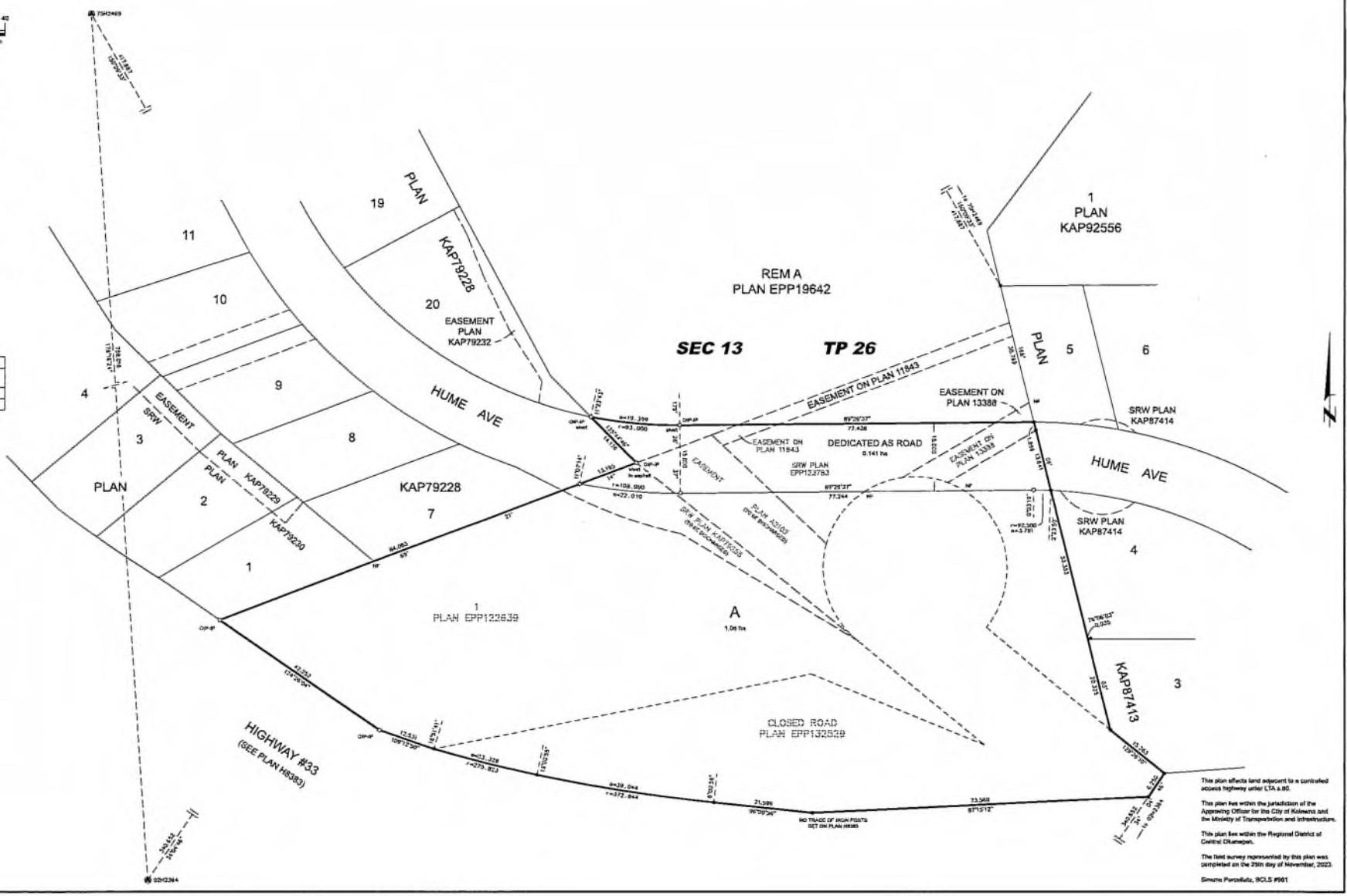
Integrated Survey Area No. 4, City of Kelowna, NAD83(CRS) 4.0.0.BC.1.

Old bearings are derived from GNSS fix to geodetic control monuments 75H2469 and 02H2344 and are referred to the central meridian of UTM Zone 11.

The UTM coordinates and estimated absolute accuracy achieved are derived from the MASCOOT published coordinates and standard deviations for geodetic control monuments 75H2469 and 02H2344.

This plan shows horizontal ground-level distances unless otherwise specified. To compare grid distances, multiply ground-level distances by the average correction factor of 0.999733 which has been derived from geodetic control monument 02H2344.

| NAD83(CRS) 4.0.0.BC.1 UTM ZONE 11 COORDINATES | | | |
|---|-------------|------------|-------------------|
| Point | Northing | Easting | Absolute Accuracy |
| 75H2469 | 5327253.808 | 328965.138 | 0.02 |
| 02H2344 | 5526479.581 | 330014.402 | 0.02 |



AllTerra
Land Surveying Ltd.
www.AllTerraSurveying.ca
P.O. Box 762, 1122 Pkwy, Kelowna BC, V1Y 9K1

This plan effects land subject to a controlled access highway order (LTA 8.85).
This plan lies within the jurisdiction of the Approving Officer for the City of Kelowna and the Ministry of Transportation and Infrastructure.
This plan lies within the Regional District of Central Okanagan.
The last survey represented by this plan was completed on the 29th day of November, 2022.
Simone Purvis-Roberts, BCLS #961

**STATUTORY RIGHT OF WAY PLAN OVER PARTS OF LOT A,
SEC 13, TP 26, ODYD, PLAN EPP132530.**

PURSUANT TO SECTION 113 OF THE LAND TITLE ACT
BCGS 82E.084
SCALE 1:300 METRIC

The intended plot size of this plan is 880mm in width by 560mm in height (D-size) when plotted at a scale of 1:300 METRIC.

LEGEND

- Densite Control Monument Found
- Densite Standard Iron Post Found
- Densite Standard Iron Pin Set
- Densite Witness

This plan shows lots of their witness posts which are not set on the true corner(s).

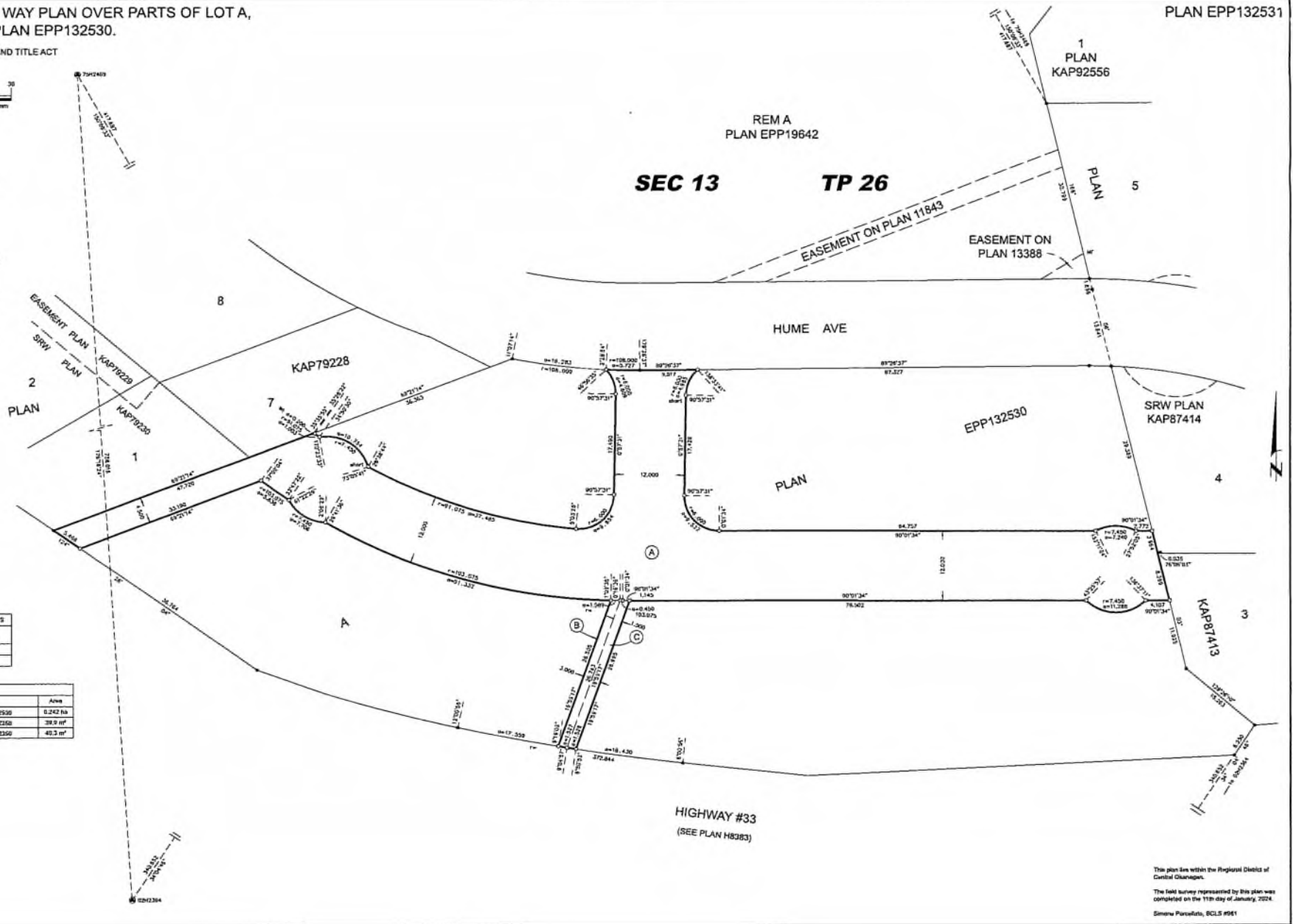
Distances shown are horizontal, ground-level distances, in metres and decimals thereof.

Integrated Survey Area No. 4, City of Kelowna, MADE(CSRS) 4.0 8 BC. 1.

Grid bearings are derived from GNSS ties to geodetic control monuments 79G2489 and 02H2364 and are referred to the central meridian of UTM Zone 11.

The UTM coordinates and estimated absolute accuracy achieved are derived from the MASCOT published coordinate and standard deviations for geodetic control monuments 79G2489 and 02H2364.

This plan shows horizontal ground-level distances unless otherwise specified. To compute grid distances, multiply ground-level distances by the average vanishing factor of 0.9998723 which has been derived from geodetic control monument 02H2364.



| MADN(CSRS) 4.0 8 BC. 1 UTM ZONE 11 COORDINATES | | | |
|--|-------------|------------|-------------------|
| Point | Harding | Existing | Absolute Accuracy |
| 79G2489 | 5527235.908 | 529965.136 | 0.02 |
| 02H2364 | 6526479.691 | 339514.400 | 0.02 |

| BOOK OF REFERENCE | | |
|-------------------|--|---------------------|
| Area | Legal Description | Area |
| 'A' | LOT A, SEC 13, TP 26, ODYD, PLAN EPP132530 | 0.242 ha |
| 'B' | LOT A, SEC 13, TP 26, ODYD, PLAN EPP132530 | 39.9 m ² |
| 'C' | LOT A, SEC 13, TP 26, ODYD, PLAN EPP132530 | 40.3 m ² |

AllTerra
Land Surveyors Ltd.
www.allterra.ca
Ph: 250.762.9122 Fax: 522997.00

This plan lies within the Regional District of Central Okanagan.
The field survey represented by this plan was completed on the 11th day of January, 2024.
Elinore Purcell-Robb, BCLS #961

**BARE LAND STRATA PLAN OF LOT A,
SEC 13, TP 26, ODYD, PLAN EPP132530**

STRATA PLAN EPS9828

CITY OF KELOWNA
BCGS #2E.084
SCALE 1:300 METRIC

The intended plot size of this plan is 884m in width by 560m in height (D=42) when plotted at a scale of 1:300 METRIC.

LEGEND

- ⊙ Devise Control Monument Found
- ⊙ Devise Standard Iron Post Found
- ⊙ Devise Standard Iron Post Set
- SL Devise Strata Lot
- WT Devise Witness

This plan shows one or more witness posts which are not set on the true corner(s).

Distances shown are horizontal, ground-level distances, in metres and decimals thereof.

Integrated Survey Area No. 4, City of Kelowna, NAD83(CRS) 4.0.B.C.1.

One bearing is derived from CHS5 to its geodetic control monument 75H2489 and 52H2364 and are referred to the central meridian of UTM Zone 11.

The UTM coordinates and estimated absolute accuracy achieved are derived from the MAGDOT published coordinates and standard deviations for geodetic control monuments 75H2489 and 52H2364.

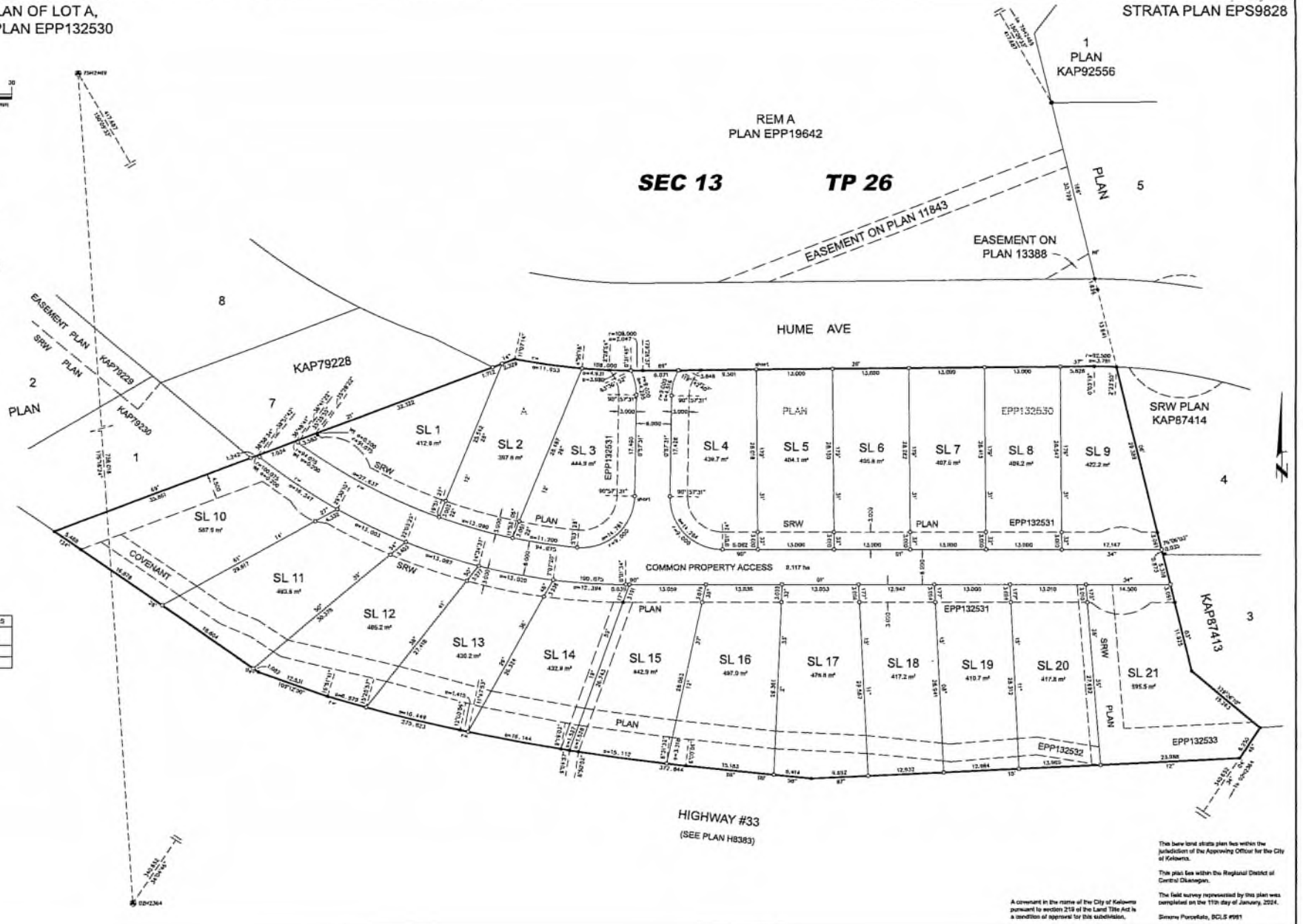
This plan shows horizontal ground-level distances unless otherwise specified. To compute grid distances, multiply ground-level distances by the average combined factor of 0.999522 which has been derived from geodetic control monument 52H2364.

City Addresses:

- | | |
|-----------------------|-----------------------|
| SL 1 - 1125 Hume Ave | SL 11 - 1126 Hume Ave |
| SL 2 - 1118 Hume Ave | SL 12 - 1122 Hume Ave |
| SL 3 - 1112 Hume Ave | SL 13 - 1126 Hume Ave |
| SL 4 - 1102 Hume Ave | SL 14 - 1140 Hume Ave |
| SL 5 - 1108 Hume Ave | SL 15 - 1144 Hume Ave |
| SL 6 - 1104 Hume Ave | SL 16 - 1148 Hume Ave |
| SL 7 - 1100 Hume Ave | SL 17 - 1152 Hume Ave |
| SL 8 - 1178 Hume Ave | SL 18 - 1158 Hume Ave |
| SL 9 - 1172 Hume Ave | SL 19 - 1160 Hume Ave |
| SL 10 - 1124 Hume Ave | SL 20 - 1164 Hume Ave |
| | SL 21 - 1168 Hume Ave |

| Point | NAD83(CRS) 4.0.B.C.1 UTM Zone 11 Coordinates | Northing | Easting | Absolute Accuracy |
|---------|--|-------------|---------|-------------------|
| 75H2489 | 5527235.908 | 3279965.138 | 0.02 | |
| 52H2364 | 5125479.581 | 330514.459 | 0.02 | |

AllTerra
Land Surveying Ltd.
1000 Lakeshore Drive
PO Box 762 7122 VW, Kelowna BC



The bare land strata plan lies within the jurisdiction of the Approving Officer for the City of Kelowna.
This plan lies within the Regional District of Central Okanagan.
The field survey represented by this plan was completed on the 11th day of January, 2024.
A covenant in the name of the City of Kelowna pursuant to section 219 of the Land Title Act is a condition of approval for this subdivision.
Survey Purposes, BCLS #991

REFERENCE PLAN OF COVENANT OVER PARTS OF STRATA LOTS 10 TO 20, SEC 13, TP 26, ODYD, STRATA PLAN EPS9828

PLAN EPP132532

PURSUANT TO SECTION 99(1)(e) OF THE LAND TITLE ACT
BCGS 82E.084
SCALE 1:300 METRIC



The intended plot size of this plan is 854mm in width by 500mm in height (D-size) when printed at a scale of 1:300 METRIC.

LEGEND

- Derivative Control Monument Found
- Derivative Standard Iron Post Found
- Derivative Standard Iron Post Set
- Derivative Strata Lot

Distances shown are horizontal, ground-level distances, in metres and decimals thereof.

Integrated Survey Area No. 4, City of Kelowna, NAD83(CSRS) 4.0.0.BC.1.

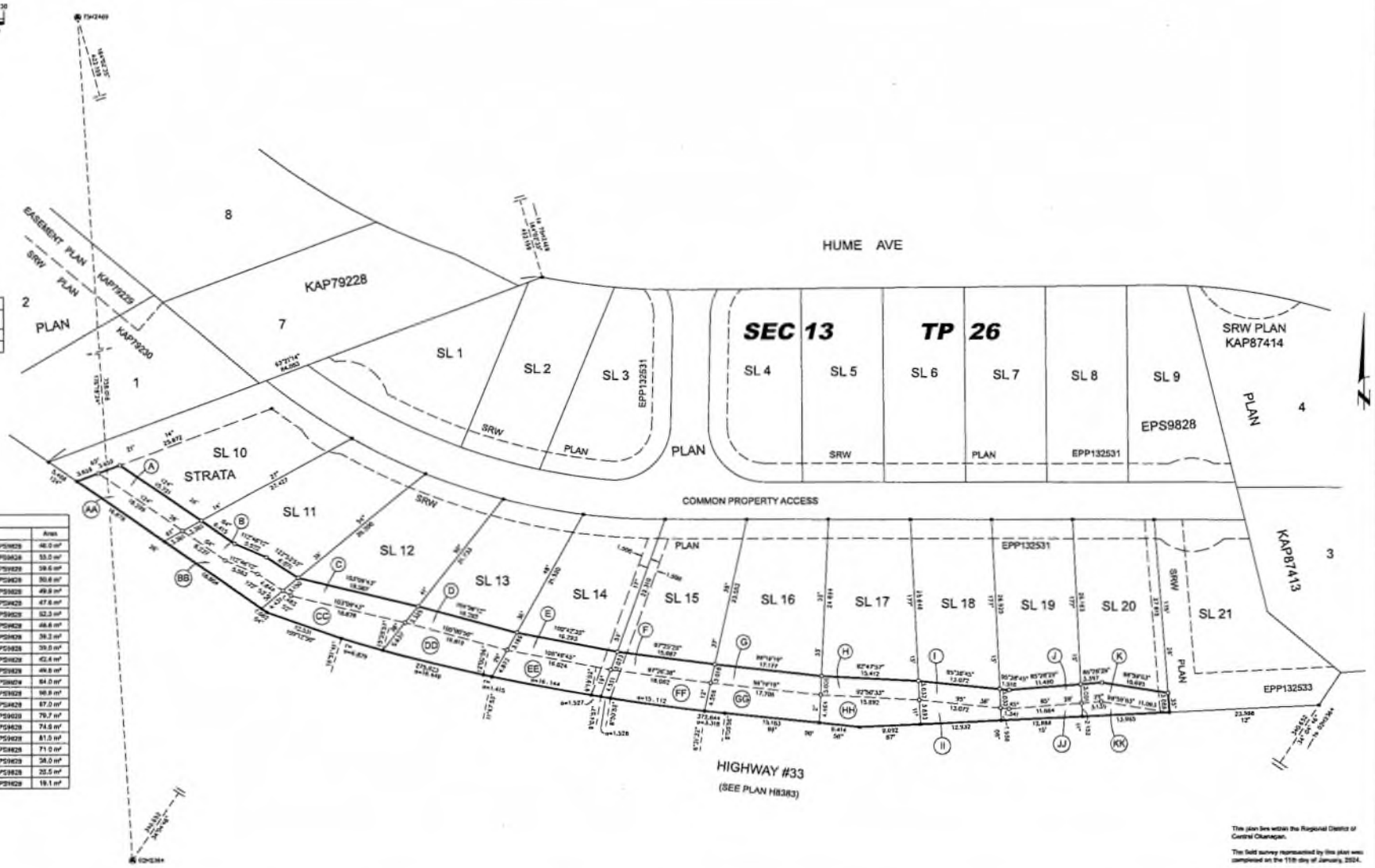
Old bearings are derived from GNSS line to geodetic control monuments TP2488 and 024254 and are referred to the central meridian of UTM Zone 11.

The UTM coordinates and adjusted azimuth accuracy indicated are derived from the NAD83(CSRS) published coordinates and standard deviations for geodetic control monuments TP2488 and 024254.

This plan shows horizontal ground-level distances unless otherwise specified. To compute grid distances, multiply ground-level distances by the average combined factor of 0.9998723 which has been derived from geodetic control monument 024254.

| NAD83(CSRS) 4.0.0.BC.1 UTM ZONE 11 COORDINATES | | | |
|--|------------|-----------|-------------------|
| Point | Northing | Easting | Absolute Accuracy |
| TP2488 | 552725.909 | 22986.138 | 0.02 |
| 024254 | 552947.591 | 23014.400 | 0.02 |

| Area | Legal Description | Area |
|------|---|---------------------|
| A' | SL 16, SEC 13, TP 26, ODYD, STRATA PLAN EPS9828 | 46.0 m ² |
| B' | SL 11, SEC 13, TP 26, ODYD, STRATA PLAN EPS9828 | 53.5 m ² |
| C' | SL 12, SEC 13, TP 26, ODYD, STRATA PLAN EPS9828 | 59.6 m ² |
| D' | SL 13, SEC 13, TP 26, ODYD, STRATA PLAN EPS9828 | 50.6 m ² |
| E' | SL 14, SEC 13, TP 26, ODYD, STRATA PLAN EPS9828 | 49.9 m ² |
| F' | SL 15, SEC 13, TP 26, ODYD, STRATA PLAN EPS9828 | 47.6 m ² |
| G' | SL 16, SEC 13, TP 26, ODYD, STRATA PLAN EPS9828 | 52.3 m ² |
| H' | SL 17, SEC 13, TP 26, ODYD, STRATA PLAN EPS9828 | 58.8 m ² |
| I' | SL 18, SEC 13, TP 26, ODYD, STRATA PLAN EPS9828 | 58.3 m ² |
| J' | SL 19, SEC 13, TP 26, ODYD, STRATA PLAN EPS9828 | 59.9 m ² |
| K' | SL 20, SEC 13, TP 26, ODYD, STRATA PLAN EPS9828 | 42.6 m ² |
| L' | SL 10, SEC 13, TP 26, ODYD, STRATA PLAN EPS9828 | 46.8 m ² |
| M' | SL 11, SEC 13, TP 26, ODYD, STRATA PLAN EPS9828 | 84.0 m ² |
| N' | SL 12, SEC 13, TP 26, ODYD, STRATA PLAN EPS9828 | 50.9 m ² |
| O' | SL 13, SEC 13, TP 26, ODYD, STRATA PLAN EPS9828 | 67.0 m ² |
| P' | SL 14, SEC 13, TP 26, ODYD, STRATA PLAN EPS9828 | 79.7 m ² |
| Q' | SL 15, SEC 13, TP 26, ODYD, STRATA PLAN EPS9828 | 73.8 m ² |
| R' | SL 16, SEC 13, TP 26, ODYD, STRATA PLAN EPS9828 | 81.5 m ² |
| S' | SL 17, SEC 13, TP 26, ODYD, STRATA PLAN EPS9828 | 71.0 m ² |
| T' | SL 18, SEC 13, TP 26, ODYD, STRATA PLAN EPS9828 | 58.0 m ² |
| U' | SL 19, SEC 13, TP 26, ODYD, STRATA PLAN EPS9828 | 25.5 m ² |
| V' | SL 20, SEC 13, TP 26, ODYD, STRATA PLAN EPS9828 | 19.1 m ² |



AllTerra
Land Surveying Ltd.
750-750-7500
750-750-7500

This plan lies within the Regional District of Central Okanagan.
This field survey represented by this plan was completed on the 11th day of January, 2024.
Shirley Puccillo, BCLS #981